



1 Basic information about smoke alarms

1. The alarm is designed to detect smoke entering the sensing chamber (not heat or flames). Once smoke has been detected the 85dB siren will sound as an early warning signal that could provide precious time for you and your family to escape.
2. This smoke alarm will not prevent a fire: it is purely an alarm signal.
3. Place your smoke alarm as close to the centre of the ceiling as possible
4. Place a smoke alarm on every floor and outside every sleeping area of your home.
5. The alarm may beep when the battery is installed – this indicates that it has been fitted correctly. The red LED will flash every 45 seconds to indicate that it is receiving power from the battery.
6. If the alarm beeps once every 45 seconds, the battery needs to be replaced.
7. Test your alarm once a week by pushing the test button for approx. 5 seconds.

2 Locating your smoke alarm

For maximum protection we strongly recommend that you install a smoke alarm in every room (except bathrooms and kitchens). Research indicates that substantial increase in warning time can be obtained with each properly installed additional smoke alarm. The minimum level of coverage is one per floor or one outside each sleeping area, however, we suggest that you follow the guide-lines below.

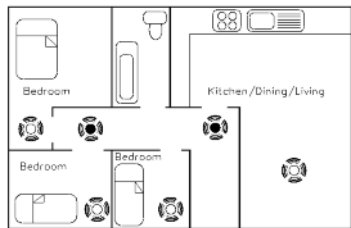
-  = Minimum protection (every storey, every sleeping area)
-  = Maximum protection (all rooms except kitchens and bathrooms)

Single storey dwellings

For the minimum level of protection in a single storey dwelling, such as flat or bungalow, the smoke alarm should be located between the sleeping area and the living area (see figure 1). This will mean that the alarm is near the most likely source of a fire (i.e. living rooms and kitchens). It is important to ensure that the alarm in his location is loud enough to wake people sleeping in the bedrooms.

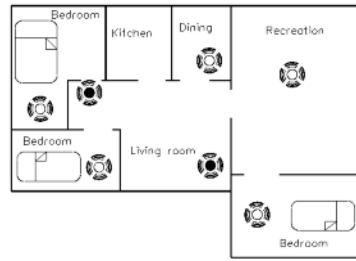
If a smoke alarm is too far to wake those sleeping, it is advisable to link it with another near the sleeping area. The Interconnect Smoke Alarm is designed for this purpose – when one alarm senses smoke, it triggers all the connected units (see section 9.2 for further details.)

Figure 1



Single storey dwellings with more than one sleeping area (see figure 2) should have an alarm located outside each area. If a hallway is longer than 12 meters, one alarm will not be sufficient. A smoke alarm should be located at each end.

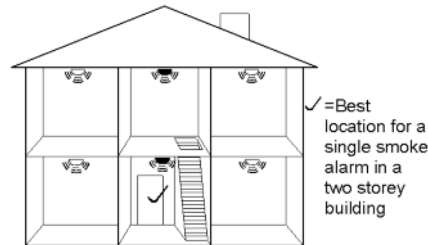
Figure 2



Multi storey dwellings

For the minimum level of protection in a multi storey dwelling, smoke alarms should be placed on the ground floor near the stairs (this will detect smoke from a fire in the kitchen or living room before it reaches the upstairs landing and bedrooms), and on the upstairs landing (to detect smoke from a fire in a bedroom).

Figure 3



For maximum protection, a smoke alarm should be placed in every room (except kitchens and bathrooms), particularly when:

1. Bedroom doors are kept shut at night (an alarm in the hallway may not wake the occupant through a closed doors).
2. Rooms contain electrical appliances such as heaters or electric blankets.
3. Bedrooms are occupied by smokers.
4. Rooms are occupied by persons who may not be able to respond very quickly, such as the elderly or young children.

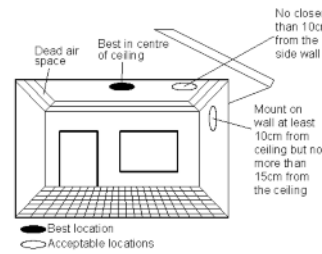
Important: This smoke alarm is only suitable for individual household units and not for multi occupancy blocks, commercial or industrial use.

3 Positioning the smoke alarm

Once the most suitable location has been found, the smoke alarm must be positioned where it will be most effective.

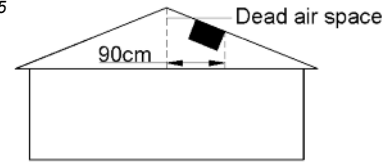
A central ceiling position is the most suitable for the alarm as smoke rises and spreads out. If this is not possible, the alarm can be mounted on the wall. The area around the corner of the ceiling is dead air space where the air does not move, so do not position the alarm on the ceiling closer than 10 cm from the wall, and on the wall place the alarm at least 10 cm but no further than 15 cm from the ceiling (see figure 4).

Figure 4



When installing the alarm in a room with a sloped or peaked roof, position it 90 cm horizontally from the highest point as dead air at the apex may prevent smoke from reaching the unit (see figure 5).

Figure 5



NB. Smoke Alarm with Silencer is more suitable for areas where local conditions are likely to cause false triggerings, such as near kitchens and bathrooms. The button can be used to silence a false alarm for 12 minutes while the smoke clears. See section 9.1 for more details.

4 Where not to put the smoke alarm

The smoke alarm should NOT be located in the following areas:

1. Bathrooms, damp or humid or dripping or splashing area, garages and any rooms where the alarm may be triggered by local conditions, i.e. steam or condensation in a bathroom, smoke from cooking appliances, and fumes from vehicles.
2. Location where extremes in temperature occur (below 4°C/39°F or above 40°C/104°F, such as attics).
3. Near decorative features/fittings that may prevent smoke from entering the alarm, such as light fittings, door or window frames.
4. On any surface that is warmer or colder than the rest of the room. Temperature differences may prevent smoke from reaching the alarm (such as loft hatches or uninsulated exterior walls).
5. Near air vents, drafty windows or heaters – the direction of airflow may be changed and smoke driven away from the alarm.
6. In dead air spaces – see figures 4 and 5.
7. In very dusty or dirty areas – dust can build up in the sensing chamber and make the alarm overly sensitive, or it can block the vents into the sensing chamber preventing smoke from entering.
8. In infested areas. Small insects entering the alarm may cause nuisance alarms.
9. Location where it is awkward to reach the alarm for testing, cleaning, battery changing etc.

NB. For Interconnect Smoke Alarm, see section 9.2 for wiring details.

Once you have decided the best position for the smoke alarm, the unit must be mounted on the ceiling or wall. The unique "Twist and Lock" mounting bracket has been designed specially for easy installation, and allows you to

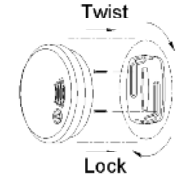
remove the alarm from the ceiling or wall for battery changing and cleaning with the minimum of fuss.

1. Remove the bracket from the back of the alarm by turning it anti-clockwise
2. Attach the bracket to the ceiling or wall using the screws provided, making sure that the flat side of the bracket is flush with the mounting surface.
3. Connect the battery (supplied) to the connector and place in the battery compartment.

It is advisable to write the date the battery was installed on the back of the unit to remind you when it needs replacing.

4. Place the alarm on the bracket and twist clockwise – the smoke alarm will lock into position on the bracket.

Figure 6



6 How to test that the smoke alarm is working

The alarm has a test button on the front. To test the unit, press and hold the button until the alarm sounds. Note: It may be necessary to press the test button for up to 10 seconds before the alarm sounds. When the button is released, the siren will stop. The alarm should be tested at least once a week. Do not test the smoke alarm with a flame. The red LED within the test button will flash approximately every 45 seconds to indicate that the smoke alarm is functioning correctly.

If the red LED is not flashing, or the unit does not respond to the test button:

1. Make sure the unit has been cleaned adequately.
 2. Check for obvious damage.
- If the alarm still fails to work, do not attempt to repair it yourself, as this will invalidate any warranty (see "Warranty" on back page). Return the unit with proof of purchase to the distributor indicating the nature of the problem.

False alarms – If the alarm sounds and there is no sign of a fire, firstly ensure that everyone in the house is in a safe position, and then investigate. Check the house carefully to make sure that a fire is not smoldering. Check the location of the alarm that sounded to see if the surrounding conditions have activated it – such as cooking fumes from the kitchen. It may be necessary to relocate the alarm to prevent a repetition.

7 If smoke alarm goes into alarm

Do not disconnect the battery to silence nuisance alarms – open a window or fan the air around the alarm to disperse the smoke. The alarm will switch off as soon as the smoke has gone. NB. If the Smoke Alarm has a Hush Button to temporarily silence false alarm, see section 9.1 for more details.

If the unit alarms and you are not testing the unit, never ignore it; otherwise, may result in injury or death. If the cause of the alarm is not clear, assume that there is a potentially dangerous situation and evacuate everyone out of the area immediately.

Warning !

The battery in this unit is not replaceable. Once they reach the end of service life, or after 10 years – whichever comes first - replace a new smoke alarm.

8 Regular Maintenance

Test it at least once a week. Every six months gently clean the unit with a soft brush or the brush attachment on a vacuum cleaner to remove the dust. Always test the smoke alarm after cleaning.

Warning: Do not paint the smoke alarm.

9 Smoke alarm with additional features

A wide range of smoke alarm has been developed to suit differing locations and requirements.

9.1 Smoke Alarm with Silencer

This model features a Silencer which can be used to silence nuisance alarms and it is recommended for caravans, workshops, near kitchens and bathrooms – areas where local conditions may cause false alarms.

1. To stop a false alarm simply press the button on the face of the unit (this is the same as the test button). The alarm will go into the Silencer mode for approximately 12 minutes.
2. At the end of the 12 minute Silencer period, the alarm will automatically reset itself. If smoke is still present, the alarm will sound again – the button can be pressed again to allow further time for the smoke to clear.
3. While in the Silencer mode, the alarm will still be in the detection mode but the sensitivity is decreased. If the density of smoke increases, the unit will automatically bypass the Silencer mode and the alarm will sound.
4. After installation & testing, the alarm may go into the Silence mode. The unit will automatically switch to the detecting mode after 12 minutes.

Always determine why the alarm has been triggered before using the button. If the cause of the alarm is not clear, assume that there is an actual fire and evacuate the area.



PUSH TEST BUTTON
ONCE AND RELEASE
TO ACTIVATE
SILENCE FUNCTION

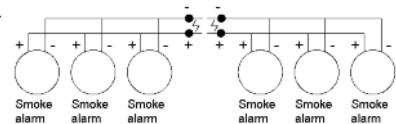
9.2 Interconnect Smoke Alarm

This model can be connected to up to 12 Interconnect Smoke Alarms. When one unit senses smoke, all those connected will sound ensuring that the alarm signal can be heard.

NB. Do not connect any other type of smoke alarm.

1. To link the Interconnect alarms, use suitable flexible wire. A maximum of 1000 feet of cable should be used between the first and last Interconnect Smoke Alarm. For convenience, it is suggested that colour coded wire is used.
2. The alarm must be wired together by linking all the terminals marked "+" together and all the terminals marked "-" together (see figure 7). These are located on the side of the unit. To secure the cable, tighten the screws on the terminal blocks which are accessible from the back of the alarm.

Figure 7



3. Once the alarms have been connected, it is essential to test each unit both as sender and a receiver. Test each alarm by pressing the test button – there may be a short delay between the sending alarm sounding and the receiving alarm sounding. Test each alarm in the same way.

10 Protecting your family from fire

Smoke alarms are a vital form of protection from fire in the home, but there are a number of other ways you can reduce the risk of fire.

In addition, to installing smoke alarms in all the relevant locations following all the instructions, cleaning the alarms, testing them once a week and replacing the units immediately if they are not working properly, the following fire safety rules should be followed:

1. Never smoke in bed.
2. Keep matches and lighters away from children.
3. Always store flammable materials, such as petrol, in proper containers, and never use them near sparks or flames.
4. Do not overload electrical circuits.
5. Ensure that electrical appliances are in good condition and that they carry the recognized approval.
6. Do not allow rubbish to accumulate.
7. Make sure that heating systems are serviced and that chimneys are cleaned regularly.
8. Keep portable heaters and other open flames, such as candles, away from combustible materials.
9. Provide additional fire safety equipment, such as fire extinguishers and fire blankets, and ensure that all members of the household know how to use them.

Draw up an escape plan from your home and practice it with your family.

Draw up a floor plan that shows at least two escape routes from each room in the house. Familiarise your family with the sound of the smoke alarm and make sure children are aware of what the signal means. Brief everyone on how to leave the building in case of fire (see section 11). Identify both a meeting place, a safe distance from the house and the nearest place to call the fire brigade. Fire drills should be held at least once every six months to make sure everyone is familiar with the procedure.

11 What to do when there is a fire

If there is a fire in your home, the precautions described will increase your chance of escaping safely. The following rules should always be highlighted during fire drills, so that they are remembered in the case of real emergency.

1. Stay calm and think clearly about the pre-arranged escape plan.
2. Leave the house as soon as possible following the planned escape route. Do not stop to collect personal belongings.
3. Check doors to see if they are hot. If a door is hot, do not open it – use another escape route.
4. Keep all doors and windows shut, opening only as a means of escaping.
5. Smoke rises, so keep close to the floor – if necessary crawl.
6. Take short breaths and if possible, cover the mouth and nose with a wet cloth.
7. Make your way to the pre-arranged meeting point and call the fire brigade. Make sure you give your full name and address.
8. Never re-enter a burning house.

For further information on fire safety and prevention, contact your local fire prevention officer.

12 Limitations of smoke alarms

Smoke alarm are designed to provide the earliest possible warning of a fire, and can provide valuable time to escape. They do, however, have limitations.

1. They will not work without power, i.e. if the alarm does not contain a battery, the wrong type of battery has been used, the battery has been installed incorrectly, or the battery is simply dead, the smoke alarm will not function.

2. The alarm will only sound once smoke has entered the sensing chamber. Anything that prevents smoke reaching the detector may delay or prevent the alarm from sounding. Smoke from fires in chimneys or walls, on roofs or the other side of closed doors may not be detected unless a significant amount of smoke reaches the alarm. Smoke alarm should therefore be installed in every room or at least on every floor of your home.
3. Smoke alarms cannot always be heard. Smoke alarms sounding the other side of a closed door or on another floor may not wake a sound sleeper, and may not be heard over other noise, such as traffic, the TV or radio. Smoke alarms may not be heard by persons who are hard of hearing.
4. Smoke alarms have a limited life. The manufacturer recommends that the alarm should not be used for more than 10 years.
5. This smoke alarm is not a substitute for personal or property insurance. Appropriate insurance cover is your responsibility. Please consult your insurance agent.

13 10-Year Limited Warranty

The smoke alarm is warranted to be free from defects in materials and workmanship for ten years from the date of purchase and is not transferable under normal use. During the first year after the date of purchase, we will replace any defective smoke alarm without charge. During the following nine years, we will replace any defective smoke alarm at a charge to you not to exceed manufacturer's cost at our discretion. This is your exclusive warranty. The warranty does not cover acts of God, such as fire, flood, hurricanes and tornadoes. This only applies if the alarm is used in the normal way and is serviced regularly. The warranty is also conditional on the smoke alarm not having been modified or subject to attempted repairs or contamination however caused. The warranty excludes incidental and consequential damages. Your statutory rights as a customer are in no way compromised by this warranty. If you think your smoke alarm is faulty, do not attempt to repair it, as this will invalidate the warranty. Return the smoke alarm.

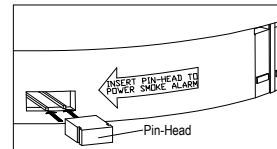
Safelincs Ltd.

9 West Street, Alford, Lincolnshire LN13 9DG, UK
www.safelincs.co.uk

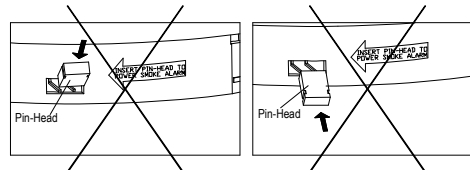
Warning! Do not try to open detector which may damage or cause improper operation. If misuse or abuse is apparent, WARRANTY will be void.

The smoke alarm has an expected life of ten years under normal use and regular maintenance. It is recommended that you replace the alarm after 10 years.

WARNING! The alarm does not work without power. INSERT Pin-head to power smoke alarm.



Ensure to gently insert the pin-head in parallel with pins



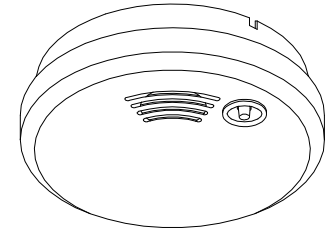
INCORRECT WAY OF INSERTING PIN RESULTED IN PIN BEND

Instruction leaflet

9VDC PHOTOELECTRIC 10 YEARS SMOKE ALARM

For models:

- PS1201- lbb Standard smoke alarm
- PS1211- lbb Interconnectable smoke alarm
- PS1221- lbb Silencer/Pause smoke Alarm
- PS1231- lbb Interconnect & silencer/pause



Important :

Please read carefully before installation and keep for future reference. This leaflet contains important information about the installation and operation of your smoke alarm. Please ensure that this leaflet remains in the household where the alarm is installed and leave this manual or a copy for the end user.

WARNING – BATTERY NOT REPLACEABLE

The battery in this unit can't be replaced, once they reach the end of service life, replace a new smoke alarm.



EN14604 : 2005
LIC NO.: KM 500468